



Protecting our beaches, seas & marine life

Sinead McCoy
Coastal Programmes Officer
Dublin





An Taisce



An Taisce



CORPORATE VOLUNTEERING



Coca-Cola Clean Coasts Week 2014

Join the movement for litter free seas



LIFE

SOURCES OF MARINE LITTER



- 1 LITTER DROPPED IN TOWNS AND CITIES
- 2 OVERFLOWING LITTER BINS
- 3 LITTER DROPPED AT THE BEACH
- 4 POORLY MANAGED INDUSTRIAL WASTE DISCHARGES
- 5 LOST SHIPPING CONTAINERS
- 6 LOST/DISCHARGED FISHING GEAR
- 7 RECREATIONAL LITTER BLOWN BY THE WIND
- 8 POORLY MANAGED LANDFILL SITES
- 9 MICROBEADS FROM PERSONAL CARE PRODUCTS
- 10 SEWAGE RELATED LITTER





5GYRES

UNDERSTANDING
PLASTIC MARINE POLLUTION
THROUGH EXPLORATION, EDUCATION AND ACTION

WHAT'S HAPPENING
NOW

GLOBAL
RESEARCH

WHAT IS THE
PROBLEM

WHO ARE OUR
PARTNERS

WHAT IS THE
SOLUTION





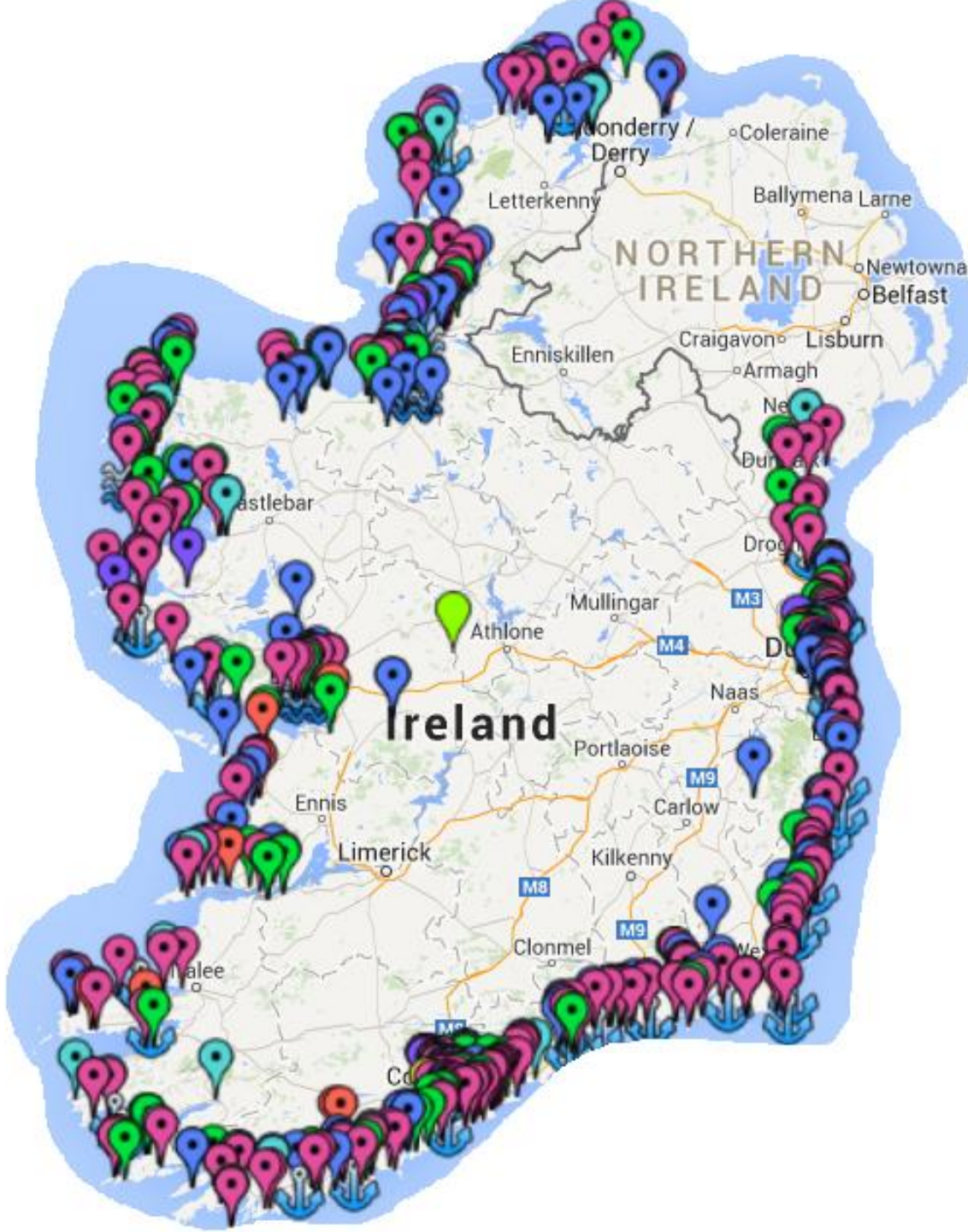
Impacts





Comhairle C ontae Shligigh
Sligo County Council
TRÁ MHULLACH MÓR
M'LLAGHMORE BEAC





1 per 12km

800



14,000



500,000



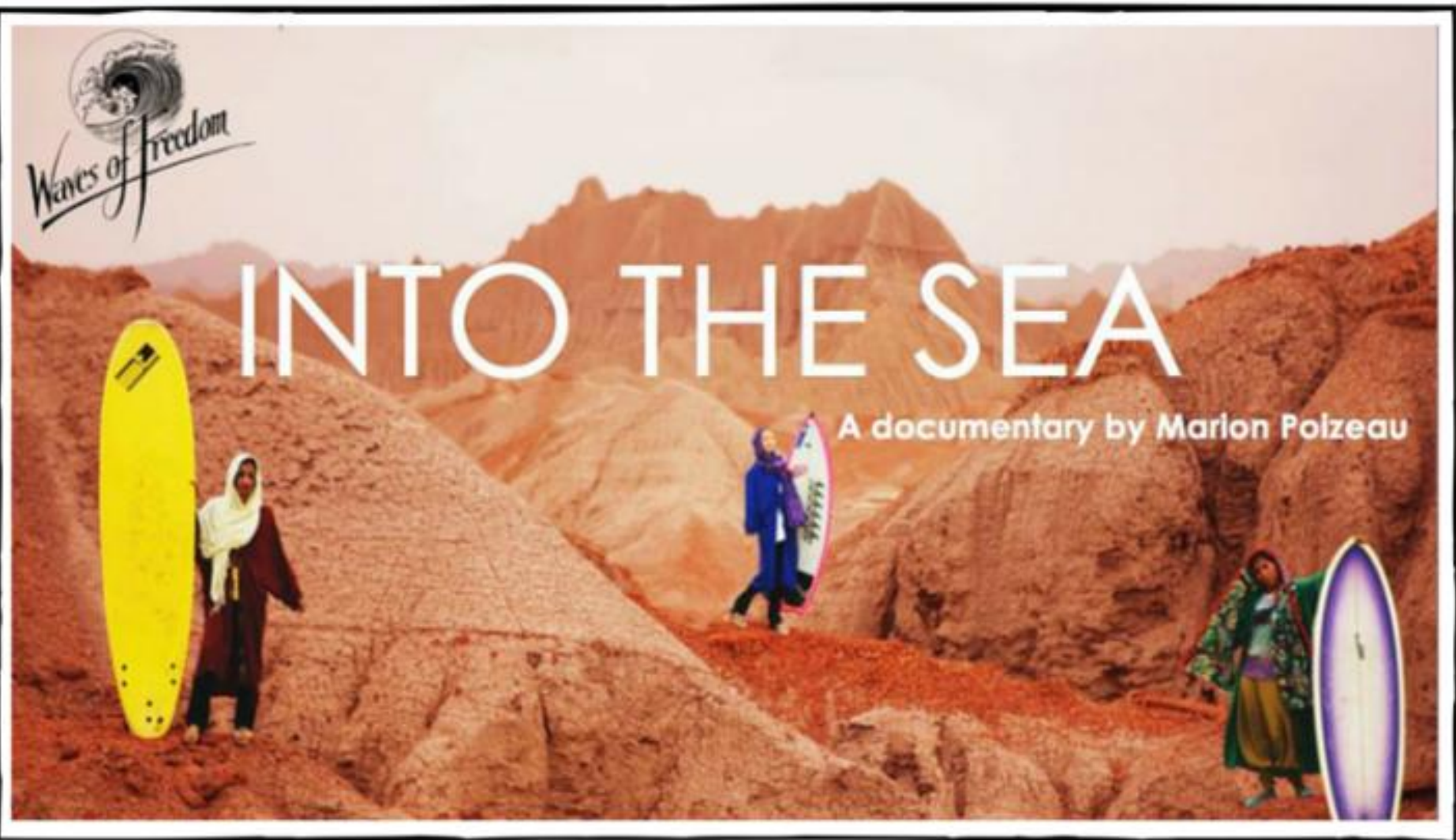


519,000



INTO THE SEA

A documentary by Marlon Polzeau



#BigBeachClean

103



Ocean Conservancy



The Big Beach Clean



Ocean Conservancy

- 103 clean ups
- 19-21 September
- 128 km of coast
- 1,442 volunteers
- 33,442 litter items removed from the coast

THE USUAL SUSPECTS

5,349



4,149



3,540



3,283



2,880



2,837



2,280



1,444



1,436



1,191





PHOTOGRAPHY
COMPETITION

3,000



THE IRISH TIMES

WEEKEND

IrishTimes.com
Monday-Friday
6.30am-11.30pm
€4.20 (incl. P&H)
€3.20 (incl. P&H)



Property ladder

The left-behind generation
Weekend Review



Why Martin should sack Roy

Diarmuid Ferriter
Page 14

Coalition to increase spending by €450m

Extra funds to allow hiring of 1,000 teachers and additional garb

Figures give scope for significant cuts in income tax and universal Social Charge

ANALYSIS

The Government has today unveiled plans which will see a €450m increase in public spending over the next three years.

The additional money will be used to hire 1,000 extra teachers, bring a large number of public services back to the level of 2008, and to fund a number of other initiatives.

It also means that the Government will be able to cut income tax and the Social Charge by a significant amount over the next three years.

The Government will also be able to cut income tax and the Social Charge by a significant amount over the next three years.

The Government will also be able to cut income tax and the Social Charge by a significant amount over the next three years.

The Government will also be able to cut income tax and the Social Charge by a significant amount over the next three years.



Double take Striking coastal image wins award
A striking entry of a lighthouse on a rocky cliff overlooking the sea, with a diver visible in the water below, has won a photography competition. The image was taken by a 15-year-old boy from a school in County Kerry.

Majority in favour of direct provision

Immigration

A majority of voters believe that direct provision should be maintained, according to a new survey. The survey also found that a majority of voters believe that the Government should continue to spend money on direct provision.

Opinion

There are many reasons why direct provision should be maintained. It provides a safe and secure environment for asylum seekers, and it allows them to wait for their claim to be processed.

There are also many reasons why direct provision should be maintained. It provides a safe and secure environment for asylum seekers, and it allows them to wait for their claim to be processed.

There are also many reasons why direct provision should be maintained. It provides a safe and secure environment for asylum seekers, and it allows them to wait for their claim to be processed.

There are also many reasons why direct provision should be maintained. It provides a safe and secure environment for asylum seekers, and it allows them to wait for their claim to be processed.

There are also many reasons why direct provision should be maintained. It provides a safe and secure environment for asylum seekers, and it allows them to wait for their claim to be processed.

There are also many reasons why direct provision should be maintained. It provides a safe and secure environment for asylum seekers, and it allows them to wait for their claim to be processed.



Great expectations

Cliff Taylor
Opinion



Ireland's on the edge

Life the

Annabel FitzGerald is a writer and journalist. She has written for a number of years about Ireland's economy and politics.

Annabel FitzGerald is a writer and journalist. She has written for a number of years about Ireland's economy and politics.

Annabel FitzGerald is a writer and journalist. She has written for a number of years about Ireland's economy and politics.

Annabel FitzGerald is a writer and journalist. She has written for a number of years about Ireland's economy and politics.

Annabel FitzGerald is a writer and journalist. She has written for a number of years about Ireland's economy and politics.

Annabel FitzGerald is a writer and journalist. She has written for a number of years about Ireland's economy and politics.

LOVE YOUR COAST
PHOTOGRAPHY COMPETITION

Annabel FitzGerald @BellesFitz - Sep 13
Super exciting come and say hi 4th floor @CleanCoasts #loveyourcoast

TEDx Dublin
Dublin

Reply Retweet

Expand

WEAVER

Celebrating 5 Years



Clean Coasts
An Taisce

**Love Your Coast
Photography Competition**



Environmentally friendly logo



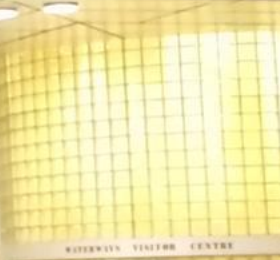
Fáilte Ireland



Coca-Cola

www.cleancoastsireland.org @CleanCoasts #LoveYourCoast

HWC1 PNB PNB





@CleanCoasts #LoveYourCoast



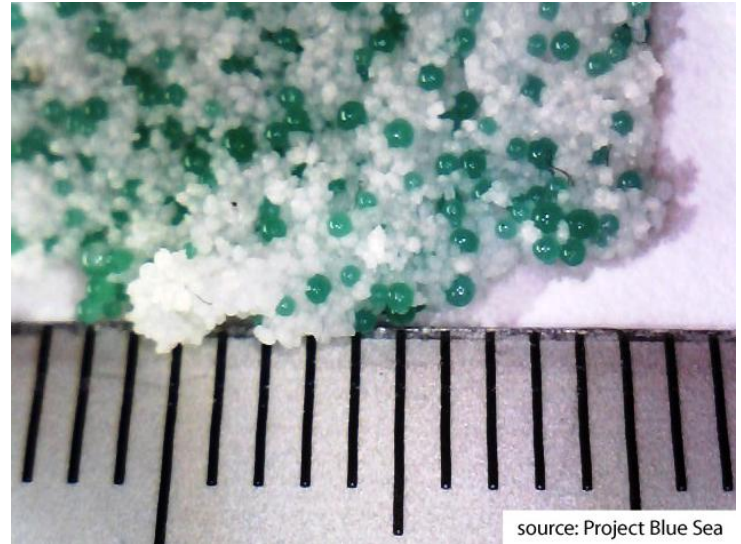



**#2 MINUTE
STREET
CLEAN**





 An Taisce



There's
an app
for that!

2015 Target

